



PRESS PACK

# THE NEW ID.7 PRO S AND ID.7 TOURER PRO S



International Media Drive, August 2024



**ID.7 Pro S** Power consumption in kWh/100 km: combined 16.2–13.6. CO<sub>2</sub> emissions in g/km: combined 0. CO<sub>2</sub> class: A.

**ID.7 Tourer Pro S** Power consumption in kWh/100 km: combined 16.6–14.0. CO<sub>2</sub> emissions in g/km: combined 0. CO<sub>2</sub> class: A.

# Contents

<b>IN BRIEF</b>		<b>MEDIA LIBRARY</b>	<b>25</b>
<b>The new ID.7 Pro S models: Volkswagen is electrifying long-distance journeys</b>	<b>04</b>	<b>NOTES</b>	<b>27</b>
<hr/>			
<b>KEY ASPECTS</b>		<b>Media contacts</b>	
		Volkswagen Communications Product Communications	
<b>Drive</b>	<b>09</b>		<b>Francisca Volze</b> Spokesperson ID.7  Phone: +49 152 22 99 74 11 francisca.volze@volkswagen.de
<b>Running gear</b>	<b>11</b>		
<b>Exterior</b>	<b>12</b>		
<b>Interior</b>	<b>15</b>		<b>Philipp Dörfler</b> Spokesperson ID.7  Phone: +49 5361 98 76 33 philipp.doerfler@volkswagen.de
<b>Standard equipment</b>	<b>19</b>		
<b>Optional equipment</b>	<b>21</b>		More at <b>volkswagen-newsroom.com</b>

# VOLKSWAGEN IS ELECTRIFYING LONG-DISTANCE JOURNEYS



**ID.7 Pro S** Power consumption in kWh/100 km: combined 16.2–13.6. CO<sub>2</sub> emissions in g/km: combined 0. CO<sub>2</sub> class: A.

**ID.7 Tourer Pro S** Power consumption in kWh/100 km: combined 16.6–14.0. CO<sub>2</sub> emissions in g/km: combined 0. CO<sub>2</sub> class: A.



## IN BRIEF



### Touring cars

The ID.7 Pro S<sup>1</sup> and the ID.7 Tourer Pro S<sup>2</sup> enable WLTP ranges of around 700 km thanks to a large 86 kWh battery

### Space gliders

The ID.7 Tourer<sup>2</sup> offers a luggage compartment volume of 605 to 1,714 litres; in the ID.7 Pro S<sup>1</sup> sports saloon, the capacity is between 532 and 1,586 litres

### Fast chargers

The new ID.7 Pro S models charge at DC charging stations with up to 200 kW<sup>3</sup>; the battery charges from 10 to 80 per cent in around 26 minutes

### Best in class

Seat massage and air conditioning function, Wellness In-Car App<sup>4</sup> (both optional) and intelligent automatic air conditioner ensure a high level of comfort

### A complete range

Volkswagen now offers the ID.7 with two battery sizes, two equipment variants, rear-wheel and all-wheel drive, and as a saloon and estate

<sup>1</sup> ID.7 Pro S – Power consumption in kWh/100 km: combined 16.2–13.6. CO<sub>2</sub> emissions in g/km: combined 0. CO<sub>2</sub> class: A.

<sup>2</sup> ID.7 Tourer Pro S – Power consumption in kWh/100 km: combined 16.6–14.0. CO<sub>2</sub> emissions in g/km: combined 0. CO<sub>2</sub> class: A.





The new ID.7 models with large 86 kWh battery: ID.7 Tourer Pro S², ID.7 Pro S¹, ID.7 GTX⁹ and ID.7 GTX Tourer¹⁰ (from left to right).

**They are the large touring vehicles in Volkswagen's electric portfolio** – the ID.7 Pro<sup>5</sup> and ID.7 Tourer Pro<sup>6</sup>. Volkswagen is now expanding the ID.7 range with the new Pro S models. The ID.7 Pro S¹ and the ID.7 Tourer Pro S² have a newly developed 86 kWh battery<sup>7</sup> on board. Compared with the 77 kWh battery<sup>7</sup> in the Pro models, this enables even longer journey distances

between two charging stops: the ID.7 Pro S¹ achieves a WLTP range of up to 709 km<sup>8</sup>, while the ID.7 Tourer Pro S can cover up to 690 km<sup>8</sup>. In addition, the Pro S models can be charged at DC quick-charging stations with up to 200 kW (Pro models: 175 kW). The ID.7 Pro S¹ and the ID.7 Tourer Pro S² have the same maximum charging capacity and new 86 kWh battery as the product

line's new performance versions – the ID.7 GTX⁹ and the ID.7 GTX Tourer¹⁰. While the design focus of the all-wheel drive GTX models was on maximum sportiness, the rear-wheel drive Pro S versions were designed for maximum efficiency.

- <sup>1</sup> ID.7 Pro S – Power consumption in kWh/100 km: combined 16.2–13.6. CO<sub>2</sub> emissions in g/km: combined 0. CO<sub>2</sub> class: A.
- <sup>2</sup> ID.7 Tourer Pro S – Power consumption in kWh/100 km: combined 16.6–14.0. CO<sub>2</sub> emissions in g/km: combined 0. CO<sub>2</sub> class: A.
- <sup>5</sup> ID.7 Pro – Power consumption in kWh/100 km: combined 16.1–14.0. CO<sub>2</sub> emissions in g/km: combined 0. CO<sub>2</sub> class: A.
- <sup>6</sup> ID.7 Tourer Pro – Power consumption in kWh/100 km: combined 16.5–14.4. CO<sub>2</sub> emissions in g/km: combined 0. CO<sub>2</sub> class: A.
- <sup>9</sup> ID.7 GTX – Power consumption in kWh/100 km: combined 18.4–16.2. CO<sub>2</sub> emissions in g/km: combined 0; CO<sub>2</sub> class: A.
- <sup>10</sup> ID.7 GTX Tourer – Power consumption in kWh/100 km: combined 18.8–16.6; CO<sub>2</sub> emissions in g/km: combined 0. CO<sub>2</sub> class: A.



**Long ranges, fast charging** Thanks to their drive efficiency, large 86 kWh battery and excellent aerodynamics with drag coefficients of 0.23 (saloon) and 0.25 (estate), the ID.7 Pro S<sup>1</sup> and the ID.7 Tourer Pro S<sup>2</sup> are among the electric vehicles with the highest range in their class. The ID.7 Pro S<sup>1</sup> and ID.7 Tourer Pro S<sup>2</sup> are powered by a 210 kW (286 PS) electric drive motor, which is compactly integrated into the rear axle. Both models combine efficiency with superior performance: the fastback saloon accelerates from 0 to 100 km/h in just 6.6 seconds, while the estate completes the sprint in

The ID.7 Pro S<sup>1</sup>.

6.7 seconds. Depending on the equipment and body version, this agility is complemented by WLTP consumption values of only 16.6 to 13.6 kWh. The charging times are also very short: with the maximum charging capacity of 200 kW, the battery can be charged from 10 to 80 per cent in about 26 minutes. With a charging capacity of 200 kW, new energy flows into the battery for a range of approx. 244 km (saloon) or approx. 236 km (estate) in just 10 minutes – enough time for a coffee break.

**Electric business class** With their high level of travel comfort, the ID.7 Pro S<sup>1</sup> and the ID.7 Tourer Pro S<sup>2</sup> reach the level of the next class up. Thanks to the virtually silent drive and the very low wind noise, both models are extremely quiet inside and out (driving noise 67 dB(A)). The standard equipment<sup>11</sup> also includes innovative comfort technologies such as the air vents of the two-zone automatic air conditioner (Air Care Climatronic), which are automatically adjusted by electric control motors. The ID.7 air conditioning system ensures ventilation comfort at the best level in its class; in addition, the rear can be subsequently activated as a third climate zone (individually controllable from the front seats and the rear bench seat). Also always on board is the intelligent IDA voice assistant with ChatGPT integration. Comfort and safety are optimised by assistance systems such as the standard equip-

The ID.7 Tourer Pro S<sup>2</sup>.

ment Adaptive Cruise Control (ACC), lane keeping system (Lane Assist), lane change system (Side Assist), the new exit warning system (warning about traffic approaching from behind when exiting the vehicle), oncoming vehicle braking when turning, swerve support, Dynamic Road Sign Display, rear view camera system, and Park Distance Control.

- <sup>1</sup> ID.7 Pro S – Power consumption in kWh/100 km: combined 16.2–13.6. CO<sub>2</sub> emissions in g/km: combined 0. CO<sub>2</sub> class: A.
- <sup>2</sup> ID.7 Tourer Pro S – Power consumption in kWh/100 km: combined 16.6–14.0. CO<sub>2</sub> emissions in g/km: combined 0. CO<sub>2</sub> class: A.





The cockpit landscape of the ID.7 Pro S models.

**Information via augmented reality** All ID.7 versions<sup>11</sup> and thus also the new Pro S models are equipped with an augmented reality head-up display as standard - the only vehicles in this class with this feature. This projects any information relevant to the journey into the driver's field of view, allowing them to keep their eyes on the road. At the same time, the AR head-up display changes the cockpit architecture since the classic instruments can be much smaller as some

information is now redundant. As a result, the driver's eyes are focused on the AR head-up display and on what is happening on the road. The dominant interior detail in terms of operation and design is the infotainment system's visual free standing touch display (diagonal 38 centimetres (15 inches)). The Discover Pro Max<sup>12</sup> navigation function can be activated here at a later date. A direct access key in the top bar of the display allows the user to open the

main menu with an overview of all apps with just one click. The Wellness In-Car App<sup>4</sup> and AirConsole<sup>13</sup> gaming app are new.

**New apps for wellness and gaming** The Wellness In-Car App<sup>4</sup> is new for the ID.7 range. It offers preconfigured programmes that adjust various vehicle functions to improve well-being while driving or during breaks. Depending on the vehicle equipment, the app does this using features such

as the background lighting, sound, air conditioning, the optional panoramic sunroof with Smart Glass<sup>12</sup> and the specification-dependent seat air conditioning and seat massage functions. The new AirConsole<sup>13</sup> gaming platform will provide entertainment when charging the car or taking a break. Volkswagen is expanding the existing range of on-board games. The on-board games are permanently installed in the infotainment system and are controlled by the touch-screen and multifunction steering wheel. The new AirConsole<sup>13</sup> gaming platform's games are streamed online to the infotainment display, which is transformed into a games console. A smartphone serves as the controller, meaning that passengers in ID.7 models can also compete against each other with their smartphones – just like at home with a games console and controllers. Volkswagen expects to launch AirConsole<sup>13</sup> in the first few European countries from mid-September and extend the offering by several more games for even more European countries by the end of the year/ beginning of next year. In parallel to the ID.7, ID.5, ID.4 and ID.3 product lines (from ID. software 4.0), AirConsole<sup>13</sup> will also be available for the new Passat, the new Tiguan, the new Golf and the new Golf Estate.





The spacious rear of the ID.7 Pro S<sup>1</sup>.

- <sup>1</sup> ID.7 Pro S – Power consumption in kWh/100 km: combined 16.2–13.6. CO<sub>2</sub> emissions in g/km: combined 0. CO<sub>2</sub> class: A.
- <sup>2</sup> ID.7 Tourer Pro S – Power consumption in kWh/100 km: combined 16.6–14.0. CO<sub>2</sub> emissions in g/km: combined 0. CO<sub>2</sub> class: A.

### Space for five and plenty of luggage

A wheelbase of 2,971 mm with an overall length of 4,961 mm already nominally indicates that the ID.7 Pro S<sup>1</sup> and the ID.7 Tourer Pro S<sup>2</sup> offer superior space for five people. This is particularly noticeable in the rear thanks to the XL-sized legroom. The luggage compartments are also large: in the saloon, the capacity is 532 litres with five people on board; loaded roof-high up to the first row of seats, the volume increases to 1,586 litres. The corresponding values for the Tourer are 605 litres (rear seat backrest in cargo position) and 1,714 litres. The load area measured up to the first seat row is 1,948 mm long in both body versions. The ID.7 Pro S<sup>1</sup> and the ID.7 Tourer Pro S<sup>2</sup> benefit here from the space-saving architecture of the Volkswagen Group's modular electric drive (MEB) platform.

**Innovative optional equipment<sup>11</sup>** Drivers of the ID.7 models receive additional support from optional technologies such as Connected Travel Assist with online data<sup>12/14/15</sup> (assisted lateral and longitudinal guidance), interactive IQ.LIGHT LED matrix headlights<sup>12</sup> and Park Assist Pro<sup>12</sup> with memory function<sup>12/16</sup> (automatic driving into and out of parking spaces). In addition, the comfort of the ID.7 Pro S<sup>1</sup> and ID.7 Tourer Pro S<sup>2</sup> can be enhanced with high-tech details such as ergoActive seats<sup>12</sup> (including pressure point massage and automatic air conditioning),

the panoramic sunroof with Smart Glass<sup>12</sup> (electronically switched to be opaque or transparent) or the adaptive chassis control (DCC)<sup>12</sup>.

The ErgoActive driver seat of the ID.7 Pro S<sup>1</sup>.



## KEY ASPECTS

### DRIVE

**APP550 with 210 kW** The ID.7 Pro S<sup>1</sup> and ID.7 Tourer Pro S<sup>2</sup> are equipped with a latest-generation electric drive system, known internally at Volkswagen as APP550. The central module of this high-efficiency drive is an electric drive motor with a maximum output of 210 kW (286 PS) and a maximum torque of 545 Nm. The electric drive motor is integrated in the driven rear axle. It accelerates the fastback saloon from 0 to 100 km/h in just 6.6 seconds; with a time of 6.7 seconds, the ID.7 Tourer Pro S<sup>2</sup> takes just fractionally longer to complete the sprint due to the minimally higher kerb weight (2,239 kg compared with 2,230 kg) and higher drag coefficient (0.25 compared with 0.23). Both Pro S versions are electronically limited to 180 km/h for efficiency reasons.

**86 kWh battery and 200 kW charging capacity** The drive motor of the new Pro S models is powered by a new lithium-ion battery – Volkswagen's largest to date, providing an energy content of 86 kWh (net); the gross energy content is 91 kWh. Compared with the 77 kWh battery of the Pro versions, the 86 kWh battery is equipped with 13 instead of 12 battery modules. The battery system is integrated into the underbody. In detail, the battery assembly com-



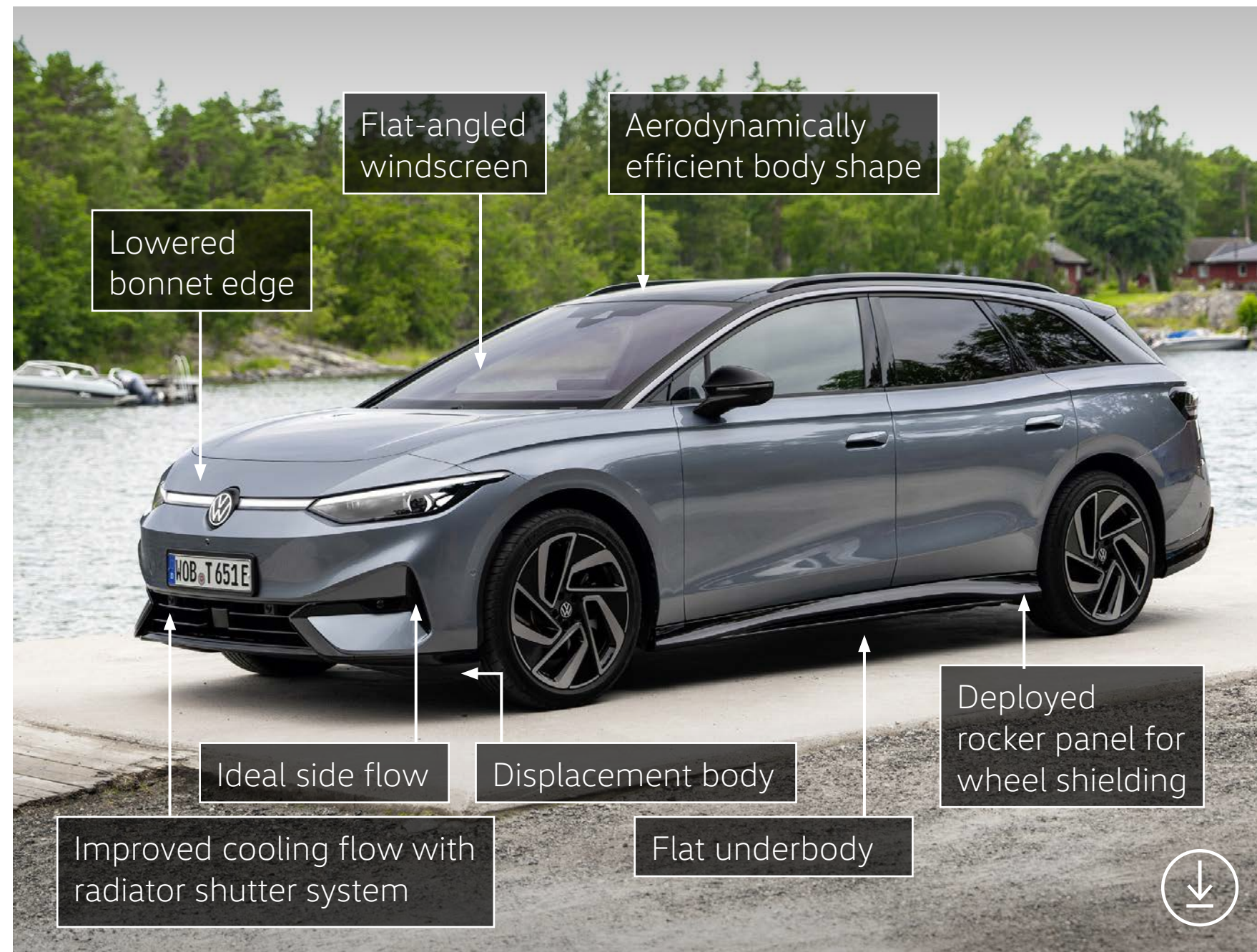
The ID.7 Pro S<sup>1</sup>.

prises the underbody guard, the all-round frame of the battery housing, a base plate with its own integrated cooling system, the battery modules, a battery management system, a cell management controller, the upper housing section and a network of

lines and connectors. The new battery can be charged with up to 200 kW at DC quick-charging stations; in contrast, the Pro models with the 77 kWh battery charge with a maximum of 175 kW.

- <sup>1</sup> ID.7 Pro S – Power consumption in kWh/100 km: combined 16.2–13.6. CO<sub>2</sub> emissions in g/km: combined 0. CO<sub>2</sub> class: A.
- <sup>2</sup> ID.7 Tourer Pro S – Power consumption in kWh/100 km: combined 16.6–14.0. CO<sub>2</sub> emissions in g/km: combined 0. CO<sub>2</sub> class: A.





The sophisticated aerodynamics of the ID.7 Tourer Pro S<sup>2</sup> optimise the range.

**Low consumption, long range** The ID.7 Pro S<sup>1</sup> and the ID.7 Tourer Pro S<sup>2</sup> are extremely economical. This is due to the new high-efficiency drive and the excellent aerodynamics of both models. Depending on the optional equipment and tyre size, a combined WLTP consumption of 16.2 to 13.6 kWh/100 km was determined for the ID.7 Pro S<sup>1</sup>. With a consumption of 13.6 kWh, the WLTP range is up to 709 km. This value reflects the theoretical range as a comparative value – in the same way as for cars with combustion engines. Impacted by

slight differences in weight and aerodynamics, the corresponding values of the ID.7 Tourer Pro S<sup>2</sup> are equally outstanding figures of 16.6 to 14.0 kWh/100 km and a WLTP range of up to 690 km at 14.0 kWh/100 km. The charging times are short: with the maximum charging capacity of 200 kW, the battery can be charged from 10 to 80 per cent in about 26 minutes. With a charging capacity of 200 kW, energy flows into the battery for a range of approx. 244 km (saloon) or approx. 236 km (estate) in 10 minutes – the same time needed for a



coffee break. At a home charging station, the 86 kWh battery is charged from 0 to 100 per cent in around nine hours with a charging capacity of 11 kW.

**Faster charging on the go** On long journeys, an innovative charging and thermal management function makes sure the battery is conditioned ahead of the next DC charging stop. Thanks to this electronic pre-preparation, the ID.7 Pro S models are supplied with energy again as quickly as possible on long journeys with one or more charging

stops. The battery is heated to the ideal temperature before the charging stop so it can absorb energy with the maximum charging capacity. This enables the charging time to be reduced by several minutes, particularly in winter. When route guidance by the optional navigation system with Electric Vehicle Route Planner is active (function can also be activated subsequently at any time), pre-conditioning is started automatically on the way to the next quick-charging station. Without active route guidance, the function can also be manually activated using the charging menu in the infotainment system. Practical feature: routes with up to 10 charging stops and 10 stopovers can be planned on a smartphone or on the web portal and then transferred to the infotainment system. The software automatically integrates the ideal charging stops into the route guidance of the navigation system – the driver does not have to search for the charging points, rather simply follow the infotainment system's suggestions.

<sup>1</sup> ID.7 Pro S – Power consumption in kWh/100 km: combined 16.2–13.6. CO<sub>2</sub> emissions in g/km: combined 0. CO<sub>2</sub> class: A.

<sup>2</sup> ID.7 Tourer Pro S – Power consumption in kWh/100 km: combined 16.6–14.0. CO<sub>2</sub> emissions in g/km: combined 0. CO<sub>2</sub> class: A.



## RUNNING GEAR

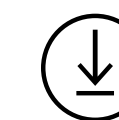
### Wide spread of comfort and agility

The ID.7 Pro S<sup>1</sup> and ID.7 Tourer Pro S<sup>2</sup> are comfortable touring cars whose balanced running gear offers a high level of comfort in all driving situations in combination with the long wheelbase. Both versions also demonstrate particularly agile handling on country roads as well as outstanding manoeuvrability in the city (turning circle: approx. 10.9 m). The large spread between comfort and agility is facilitated by the basic layout of the running gear, the enhanced adaptive chassis control (DCC) and an adapted Vehicle Dynamics Manager. The comfort is further optimised by details such as specifically tuned, high-damping sub-frame mounts on the rear axle. In addition, the low centre of gravity due to integration of the battery in the vehicle floor has a positive impact on handling.

**MacPherson plus a five-link axle** The basic layout of the running gear consists of a MacPherson front axle and a five-link rear axle. The ID.7 Pro S<sup>1</sup> and ID.7 Tourer Pro S<sup>2</sup> can be optionally equipped with the adaptive chassis control system DCC: New software and refined algorithms make the DCC system particularly precise. It can now detect how the wheels and body are moving better than ever before. DCC offers the driver the option of using

a slide control to adjust the running gear to a more comfortable or sportier setting by means of the selected driving profile (Eco, Comfort, Sport or Individual). In addition, the Vehicle Dynamics Manager specially adapted to the product line enables a wide spread between comfort and agility in the ID.7 Pro S<sup>1</sup> and ID.7 Tourer Pro S<sup>2</sup>. The Vehicle Dynamics Manager coordinates and optimises the lateral dynamics and acts as the central control unit to continuously en-

sure maximum driving stability. The application of the steering system has also been specifically adapted to the product line. The set-up enables very precise vehicle control. The result being Volkswagen's hallmark linear handling characteristics. With optional progressive steering, more dynamic vehicle reactions are possible with smaller changes of the steering angle, delivering even more enjoyment behind the wheel.



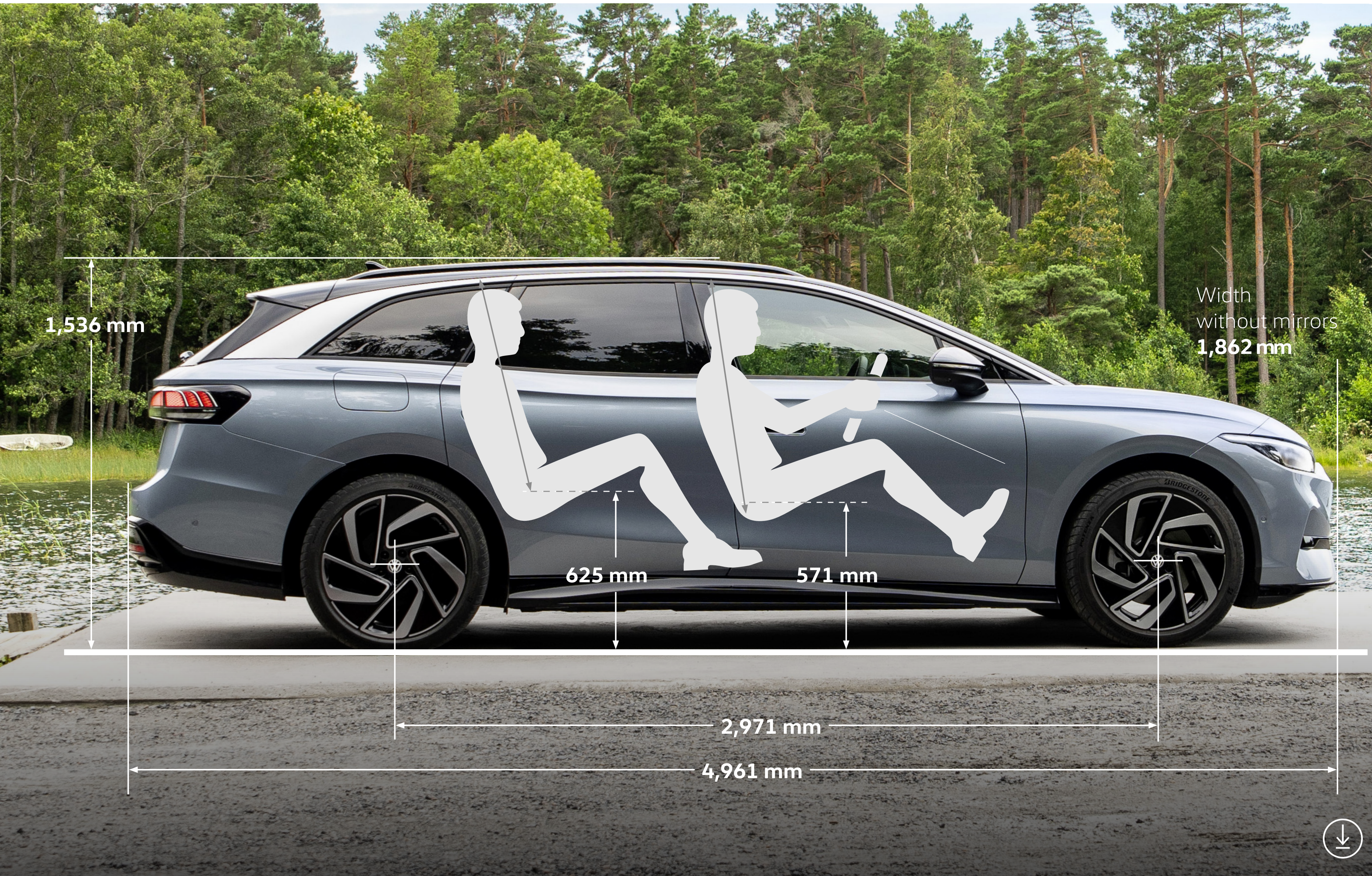
The Vehicle Dynamics Manager accesses the XDS+, DCC and 4MOTION all-wheel drive.

- <sup>1</sup> ID.7 Pro S – Power consumption in kWh/100 km: combined 16.2–13.6. CO<sub>2</sub> emissions in g/km: combined 0. CO<sub>2</sub> class: A.
- <sup>2</sup> ID.7 Tourer Pro S – Power consumption in kWh/100 km: combined 16.6–14.0. CO<sub>2</sub> emissions in g/km: combined 0. CO<sub>2</sub> class: A.



## EXTERIOR

**Dynamic proportions** The fastback saloon and estate share all exterior dimensions except for the roof length. Both models are 4,961 mm long and have a very long wheel-base of 2,971 mm with correspondingly short body overhangs as distinguishing features. Both versions of the ID.7 Pro S<sup>1</sup> are 1,862 mm wide (without exterior mirrors) and 1,536 mm high. As described above, the ID.7 Tourer is characterised by a roof line that extends further to the rear between the C- and D-pillars and thus increases the height in this area.



The ID.7 Tourer Pro S<sup>2</sup> is an estate car in the 5-metre class.

- <sup>1</sup> ID.7 Pro S – Power consumption in kWh/100 km: combined 16.2–13.6. CO<sub>2</sub> emissions in g/km: combined 0. CO<sub>2</sub> class: A.
- <sup>2</sup> ID.7 Tourer Pro S – Power consumption in kWh/100 km: combined 16.6–14.0. CO<sub>2</sub> emissions in g/km: combined 0. CO<sub>2</sub> class: A.





The ID.7 Pro S<sup>1</sup>.

**Aerodynamic front** The front of both body versions has an identical design and is extremely aerodynamic, with a frontal area of 2.46 m<sup>2</sup>. There are deliberately no differences in the design of the Pro and Pro S versions. Striking features are the charismatic LED headlights at the front, which is completely closed in the upper area. This area opens downwards as well as to the sides of the bumper for optimal air flow around the ID.7. The ID.7 Pro S<sup>1</sup> and ID.7 Tourer Pro S<sup>2</sup> can be optionally configured with interactive

IQ.LIGHT LED matrix headlights including a horizontal LED strip and illuminated Volkswagen logo - including the Dynamic Light Assist light function (interactive continuous high beam without dazzling oncoming traffic).

**Elongated silhouettes** The side design of the ID.7 Pro S<sup>1</sup> is characterised by the coupé-shaped roof at the rear. The ID.7 Tourer Pro S<sup>2</sup> sets a counterpoint here with its straight line above the C- and D-

pillars. The side contours of the estate model are flanked by black, aerodynamically flat roof rails. Below the window sill, the striking character line with sharp undercut present on both body versions creates powerful, positive tension in the silhouette. The large dimensions of the alloy wheels (standard 19-inch, optional 20-inch) also stand out from the side.

- <sup>1</sup> ID.7 Pro S – Power consumption in kWh/100 km: combined 16.2–13.6. CO<sub>2</sub> emissions in g/km: combined 0. CO<sub>2</sub> class: A.
- <sup>2</sup> ID.7 Tourer Pro S – Power consumption in kWh/100 km: combined 16.6–14.0. CO<sub>2</sub> emissions in g/km: combined 0. CO<sub>2</sub> class: A.

The ID.7 Pro S<sup>1</sup> with the 20-inch Montreal alloy wheel rim.



**Rear with horizontal LED strip** The horizontal body design at the rear of both vehicles lends them a wide and powerful appearance. This effect is enhanced by the LED light strip (optionally as 3D LED tail light clusters with dynamic brake and turn signals). Depending on the equipment, the

Volkswagen logo in the horizontal LED strip is illuminated red. Equally style-defining: the cabin – consisting of the roof, A-, B-, C- and D-pillars as well as the window surfaces – rests on the wider body flank in the lower area of both body versions and thus creates a powerful shoulder area.


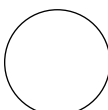





The ID.7 Tourer Pro S<sup>2</sup> with red-illuminated VW badge.



**Seven colours, five two-tone paint finishes**

The new ID.7 Pro S<sup>1</sup> models can be configured in seven different colours. The standard colour is Moonstone grey solid and there are also six optional metallic colours to choose from: Glacier white metallic, Aquamarine blue metallic, Stonewashed blue metallic, Scale silver metallic, Grenadilla black metallic and Kings red metallic. Always black: the exterior mirror housings. All colours (except Grenadilla black metallic) have the option of being ordered as a two-tone paint finish with black roof; the roof frame strips are also painted black in this configuration

**Colours**

-  Moonstone grey solid
-  Glacier white metallic
-  Aquamarine blue metallic
-  Stonewashed blue metallic
-  Scale silver metallic
-  Grenadilla black metallic
-  Kings red metallic

- otherwise they are a matt silver colour. The two-tone paint finishes are automatically supplied with the Black Style design package. This includes black 19-inch Bergen alloy wheels, black instead of grey ID.7 lettering on the boot lid and darkened side windows in the rear. The 19-inch Hudson or 20-inch Montreal alloy wheels (both in black with a diamond-cut finish) can be selected as an option here instead of the Bergen alloy wheels.



The 20-inch Montreal alloy wheel rim.

<sup>1</sup> ID.7 Pro S – Power consumption in kWh/100 km: combined 16.2–13.6. CO<sub>2</sub> emissions in g/km: combined 0. CO<sub>2</sub> class: A.  
<sup>2</sup> ID.7 Tourer Pro S – Power consumption in kWh/100 km: combined 16.6–14.0. CO<sub>2</sub> emissions in g/km: combined 0. CO<sub>2</sub> class: A.

# INTERIOR

**Merging of the real and virtual worlds** As the only vehicles in their class, all ID.7 models are equipped with an augmented reality head-up display as standard. This projects relevant information into the driver's field of view, allowing them to keep their eyes on the road. The AR head-up display changes the cockpit architecture since the traditional instruments have become much smaller as some information is now redundant. This ID. Cockpit display is no higher than the vent band. The small ID. Cockpit also allows the driver's eyes to focus on the AR head-up display and what is happening on the road. This is all the more valid given that the status bar in the AR head-up display also shows information such as the battery charge level and consumption. Additionally, the lane-level navigation is shown in the the augmented reality area of the head-up display. The symbols are positioned perfectly in line with the real world outside the vehicle – as augmented reality. From the current model year, the active navigation of a mobile phone connected via Apple CarPlay or Android Auto is integrated into the augmented reality route display. In addition, the appearance of the AR functions has been significantly upgraded. These include enhanced animations as well as the welcome with the Volkswagen logo when starting up the head-up display. The standard ID. Light function (light strip under



The ID.7 Pro S<sup>1</sup> interior in Mistral grey/Soul black with steering wheel in Electric white.

the windscreen) provides the driver with information that can be perceived intuitively.

**38-centimetre/15-inch infotainment system** The central interface for operating the ID.7 models is the large infotainment system touch display (diagonal: 38 cm/ 15 inches). All infotainment system functions are self-explanatory and clearly arranged. To achieve this, the display has been divided into two permanently visible touch bars and the home screen. A direct access key on the left of the display's top bar allows the user to open the main menu with an overview of all apps with just one click.

Next to this is a button for the Car Control Centre, which offers direct access to the most important vehicle functions and can be personalised by the driver. The home screen in the middle combines the content of the most important apps on differently sized tiles. Alongside classic content such as navigation, the tiles offer functions such as suggestions from the IDA voice assistant. The home screen can also be personalised by the user. The bottom bar on the display contains the air conditioning and seat functions and has a home button that lets the driver return to the home screen at any time.

<sup>1</sup> ID.7 Pro S – Power consumption in kWh/100 km: combined 16.2–13.6. CO<sub>2</sub> emissions in g/km: combined 0. CO<sub>2</sub> class: A.  
<sup>2</sup> ID.7 Tourer Pro S – Power consumption in kWh/100 km: combined 16.6–14.0. CO<sub>2</sub> emissions in g/km: combined 0. CO<sub>2</sub> class: A.



**IDA voice assistant** The IDA voice assistant is standard equipment in all ID.7 models. Numerous vehicle functions can be operated using natural language. The range of functions includes configuring the driving profiles and background lighting, operating the panoramic sunroof with Smart Glass<sup>12</sup> and requesting cloud-based information. Examples of such information are the weather, flight status of commercial airlines, current status of sports events or the news. In addition, questions on all kinds of topics imaginable can be asked thanks to the online connection to databases. It is usually sufficient to use natural sentences such as "What is the latest news?". In addition, the IDA voice assistant can access the artificial intelligence database using ChatGPT in order to read out researched content on an infinite number of topics through the audio system.

**Multifunction Wellness In-Car App<sup>16</sup>** New on board the ID.7 Pro S<sup>1</sup> and ID.7 Tourer Pro S<sup>2</sup> is the Wellness In-Car App<sup>4</sup>. It offers pre-configured programmes that adjust various vehicle functions to improve well-being while driving or during breaks. Depending on the vehicle equipment, the app does this using features such as the background lighting, sound, air conditioning, the panoramic sunroof with Smart Glass<sup>12</sup> as well as seat air conditioning and seat massage function. Sound composers have specifically developed acoustic sound tapestries for the Wellness In-Car App<sup>4</sup>. The app is launched using the infotainment system. Three wellness modes are available: Fresh Up, Calm Down and Power Break (can only be activated when the vehicle is stationary). For example, Fresh Up activates a stimulating sound, refreshing air conditioning (by means of the automatic air

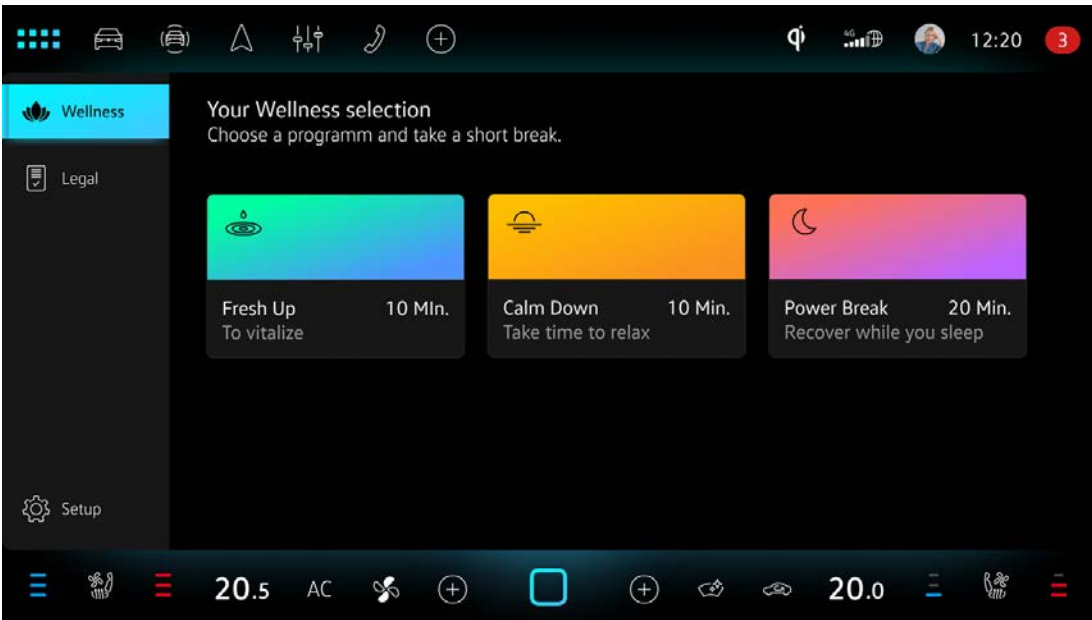


The IDA voice assistant with ChatGPT integration.

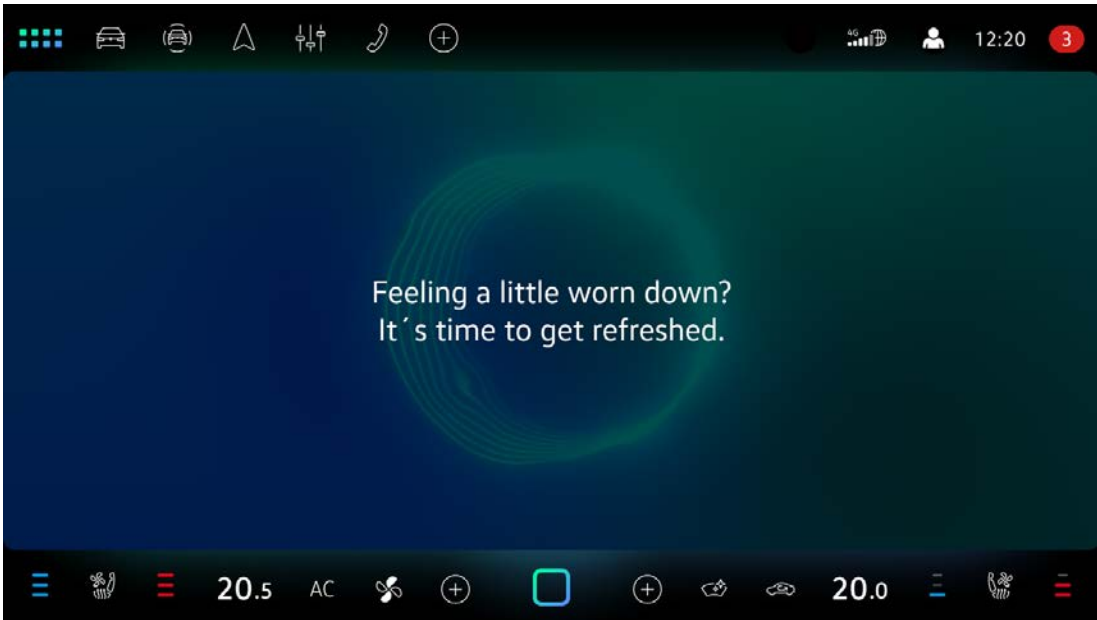
conditioner and seat ventilation), an invigorating back massage and blue and turquoise zones of the background lighting, giving a fresh colour appearance; the illuminated trims in the dash panel and door panels and the narrow light strips arranged underneath change from blue to turquoise and vice versa at calming intervals. A blue light animation runs in parallel in the ID. Light below the windscreen. The mode can also be customised according to individual preferences: the current radio station or a Spotify playlist can be used instead of the pre-programmed sound, for example. It is also possible to switch the seat massage and seat air conditioning on and off at any time. If the Volkswagen is stationary, the infotainment system screen also shows animations to complement the mood. Fresh Up and Calm

Down are automatically deactivated after 10 minutes, Power Break after 20 minutes. The Wellness In-Car App<sup>4</sup> is part of the optional Interior Package and the optional Interior Plus Package. Alternatively, the Wellness In-Car App<sup>4</sup> can be activated at a later date subject to a fee.

Start screen of the Wellness In-Car App<sup>4</sup>.



Start screen of Fresh Up mode.



<sup>1</sup> ID.7 Pro S – Power consumption in kWh/100 km: combined 16.2–13.6. CO<sub>2</sub> emissions in g/km: combined 0. CO<sub>2</sub> class: A.  
<sup>2</sup> ID.7 Tourer Pro S – Power consumption in kWh/100 km: combined 16.6–14.0. CO<sub>2</sub> emissions in g/km: combined 0. CO<sub>2</sub> class: A.





Start screen of the AirConsole<sup>13</sup> gaming platform.

**Gaming with AirConsole<sup>13</sup>** The new integration of games via AirConsole<sup>13</sup> will offer entertainment when charging the car or taking a break. Volkswagen is expanding the existing range of on-board games. The on-board games are permanently installed in the infotainment system and are controlled by the touchscreen and multifunction steering wheel. The new AirConsole<sup>13</sup> gaming platform's games are streamed online to the infotainment display, which is transformed into a games console. A smartphone serves as the controller, meaning that passengers in ID.7 models can also compete against each other with their smartphones – just

like at home with a games console and controllers. Volkswagen expects to launch AirConsole<sup>13</sup> in the first few European countries from mid-September with the games GoKartGo Air, Trivia Crack, Ludo, Tumblestone, Friends Quiz and Golaza, and extend the offering by several more games for even more European countries by the end of the year/beginning of next year. In parallel to the ID.7, ID.5, ID.4 and ID.3 product lines (from ID. software 4.0), AirConsole<sup>13</sup> will also be launched in the new Passat and new Tiguan as well as in the new Golf and Golf Variant. An active VW Connect Plus contract is required to use AirConsole<sup>13</sup>. In addition, a

registered primary user must be on board. How it works: As soon as the car is stationary and online, the AirConsole<sup>13</sup> In-Car App can be started. Then simply scan a QR code on the infotainment screen to link the smartphone. The games are now selected and controlled using a smartphone, as described. Images and sound are output via the infotainment and audio system.

#### Air conditioning with smart air vents

On board all ID.7 models, active vents with electronically controlled vertical and horizontal motors ensure fast and large-area air distribution in the interior using dynamic movements. What's more, provided the function is activated, cooling or heating starts as soon as the driver approaches the ID.7 with the key. The air flows can be adjusted individually in the interior by making corresponding settings via the central infotain-

ment display. A number of air conditioning functions can also be activated using the IDA voice assistant. The ID.7 responds to the driver saying: "Hello IDA, my hands are cold," by activating the steering wheel heating - and also directing warm air to the driver's hands.

- <sup>1</sup> ID.7 Pro S – Power consumption in kWh/100 km: combined 16.2–13.6. CO<sub>2</sub> emissions in g/km: combined 0. CO<sub>2</sub> class: A.
- <sup>2</sup> ID.7 Tourer Pro S – Power consumption in kWh/100 km: combined 16.6–14.0. CO<sub>2</sub> emissions in g/km: combined 0. CO<sub>2</sub> class: A.



Controls for the intelligent air vents of the ID.7 Pro S<sup>1</sup> and ID.7 Tourer Pro S<sup>2</sup>.



**Generous space** Thanks to the long wheel-base of 2,971 mm, both versions of the ID.7 Pro S<sup>1</sup> offer extremely generous space for both the front and rear seats. The ID.7 Pro S<sup>1</sup> and ID.7 Tourer Pro S<sup>2</sup> are additionally characterised by maximum stowage space. Loaded up to the backrests of the first row of seats (roof-high with luggage net), the saloon has a volume of 1,586 litres; with a capacity of 1,714 litres, the estate offers additional load space and height in the area of the boot lid. With five people on board, the capacity is 532 litres in the saloon when loaded up to the height of the rear seat backrest. The corresponding value for the estate is 605 litres (rear bench seat backrest in upright cargo position). The luggage compartment floor measures 1,074 mm in length up to the rear bench seat in both body versions. When the rear seat backrests are folded down, the largely flat load area length increases to 1,948 mm. The maximum width between the wheel arches is exactly 1,000 mm.



The luggage compartment dimensions of the ID.7 Tourer Pro S<sup>2</sup>.



- <sup>1</sup> ID.7 Pro S – Power consumption in kWh/100 km: combined 16.2–13.6. CO<sub>2</sub> emissions in g/km: combined 0. CO<sub>2</sub> class: A.
- <sup>2</sup> ID.7 Tourer Pro S – Power consumption in kWh/100 km: combined 16.6–14.0. CO<sub>2</sub> emissions in g/km: combined 0. CO<sub>2</sub> class: A.



# STANDARD EQUIPMENT<sup>12</sup>

The main standard equipment of the ID.7 Pro S<sup>1</sup> and ID.7 Tourer Pro S<sup>2</sup> at a glance:

## Driver assist systems (excerpt)

- » Oncoming vehicle braking when turning and swerve support
- » Driver Attention Monitor and Driver Alert System
- » Rear Traffic Alert
- » Exit warning system
- » Park Distance Control; additionally activatable option: Park Assist Pro and memory function
- » Rear view camera system; additionally activatable option: Area View
- » Lane Assist lane keeping system; additionally activatable option: Connected Travel Assist with online data
- » Lane change system Side Assist
- » Dynamic Road Sign Display

## Exterior and interior equipment (excerpt)

- » Background lighting, 10 colours to choose from
- » Exterior mirror housing with black paintwork
- » Illuminated vanity mirrors in the sun visors
- » Multifunction steering wheel; additionally activatable option: heating
- » Pedal cluster in stainless steel, with 'Play/Pause' design
- » Heated front seats
- » Front seats with height adjustment
- » Hudson 8 J x 19 alloy wheels at the front, 8.5 J x 19 at the rear, painted in black with a diamond-cut finish; 235/50 R19 tyres at the front,

## Infotainment (excerpt)

- » App-Connect Wireless for Apple CarPlay and Android Auto
- » Augmented reality head-up display.
- » Radio incl. digital radio reception DAB+ (radio)
- » Loudspeakers (8+1)
- » Infotainment system; additionally activatable option: Discover Pro Max navigation function
- » IDA voice assistant
- » USB-C ports at the front (2), USB-C charging sockets at the rear of the centre console (2); charging capacity up to 45 W
- » Comfort mobile phone interface with inductive charging function
- » Preparation for We Connect (Plus) or VW Connect (Plus); online update capability (apart from special conversions)

<sup>1</sup> ID.7 Pro S – Power consumption in kWh/100 km: combined 16.2–13.6. CO<sub>2</sub> emissions in g/km: combined 0. CO<sub>2</sub> class: A.

<sup>2</sup> ID.7 Tourer Pro S – Power consumption in kWh/100 km: combined 16.6–14.0. CO<sub>2</sub> emissions in g/km: combined 0. CO<sub>2</sub> class: A.



**Convenience and practical features  
(excerpt)**

- » Remote boot lid release
- » Windscreen in laminated safety glass, infrared-reflecting, noise-insulating, can be activated: wireless heating
- » Luggage net
- » Luggage compartment floor adjustable to 2 heights, for level load area
- » Air Care Climatronic air conditioning system with two-zone temperature control; activatable three-zone control
- » Keyless locking and starting system Keyless Access, with SAFELOCK
- » Green thermal insulation glazing, side and rear

**Light and visibility (excerpt)**

- » Exterior mirrors that can be electrically adjusted, folded in and heated, front passenger exterior mirror lowering function
- » Light Assist main-beam control
- » Automatically dimming interior mirror
- » LED tail light clusters
- » LED headlights
- » Rain sensor
- » Washer jets in the front with automatic heating
- » Illuminated door handle recesses
- » Surround lighting with logo projector

**Safety and technology (excerpt)**

- » AC charging capacity 11 kW (alternating current)
- » Airbag for driver and front passenger, with front passenger front airbag deactivation
- » CCS charging socket (AC and DC charging)
- » DC charging capacity 200 kW (direct current)
- » Anti-theft alarm with interior monitoring, alarm horn and anti-tow alarm
- » Electronic engine sound
- » Driving profile selection
- » ISOFIX retaining rings for child seats on the outer rear seats and on the front passenger seat, compatible with i-Size
- » Curtain airbags in front and rear, side airbags at the front, centre airbag
- » Mode 3 Type 2 charging cable, 16 A
- » Emergency Call Service, valid for 10 years from initial delivery, prerequisite: availability of required mobile networks
- » Proactive occupant protection system
- » Tyre pressure loss indicator
- » Electromechanical power steering, speed-dependent control
- » Acoustic warning and lamp for unfastened belts, front and rear

<sup>1</sup> ID.7 Pro S – Power consumption in kWh/100 km: combined 16.2–13.6. CO<sub>2</sub> emissions in g/km: combined 0. CO<sub>2</sub> class: A.  
<sup>2</sup> ID.7 Tourer Pro S – Power consumption in kWh/100 km: combined 16.6–14.0. CO<sub>2</sub> emissions in g/km: combined 0. CO<sub>2</sub> class: A.



## OPTIONAL EQUIPMENT<sup>13</sup>



**Above:** Illuminated applications in the ID.7 Pro S<sup>1</sup> and ID.7 Tourer Pro S<sup>2</sup>  
**Right:** Door loudspeaker of the Harman Kardon sound system.



**Background lighting** The ID.7 Pro S<sup>1</sup> and ID.7 Tourer Pro S<sup>2</sup> are equipped with background lighting that comprises a spectrum of 10 colours as standard. Background lighting with 30 colours is available as optional equipment, illuminating the trim elements on the dash panel and door trims. The driver and front passenger can activate various pre-programmed light atmosphere modes such as Vitality or Euphoria using the central infotainment display. In addition, the interior lighting is automatically adapted to the respective driving profile.

### Harman Kardon sound system

Volkswagen offers a 700 W premium sound system from Harman Kardon as an option. If selected, both ID.7 Pro S<sup>1</sup> versions are equipped with 12 high-end loudspeakers plus a centre speaker at the front and a sub-woofer in the luggage compartment. The 16-channel sound system offers four pre-configured sound settings: Pure (neutral studio sound), Relax (easy listening), Speech (focus on spoken words) and Vibrant (dynamic live sound). The sound can be individually adjusted by means of an equalizer. In addition, the listening focus can be directed to one or more of the four outer seats. This allows the driver to adjust the sound focus fully to their seat position when driving on their own, for example. It is also possible to focus the sound towards the rear of the vehicle.

- <sup>1</sup> ID.7 Pro S – Power consumption in kWh/100 km: combined 16.2–13.6. CO<sub>2</sub> emissions in g/km: combined 0. CO<sub>2</sub> class: A.
- <sup>2</sup> ID.7 Tourer Pro S – Power consumption in kWh/100 km: combined 16.6–14.0. CO<sub>2</sub> emissions in g/km: combined 0. CO<sub>2</sub> class: A.





The multi-adjustable ergoActive seats of the ID.7 product line.

**ergoActive seats** The optional ergoActive comfort seats for the driver and front passenger offer luxury-class comfort with electric 12-way adjustment, memory function, convenient entry function and adjustable thigh support. A pressure point massage is also integrated. The top-of-the-line version – the ergoActive premium seat – additionally features an automatic air conditioning function and an upgraded massage function. The climate control and massage functions are continuously displayed by means of touch controls on the top level of the infotainment system, where they can also be switched on and off and adjusted.

#### » ergoActive comfort seats

The pressure point massage function offers a unique level of comfort on long journeys. The backrests of the ergoActive comfort seats are equipped with 10 air cushions that provide a pneumatic pressure point massage to relax and activate muscles in the back.

#### » ergoActive premium seats

The second version of these seats – ergoActive premium – is equipped with two large, extra air pockets in the seat cushion. The goal here is to additionally activate the pelvis and spine. This innovative function has been awarded the seal of approval by the German Campaign for Healthier Backs (AGR) in the category 'Activation system for vehicle seats'.

#### » Active climate control in the ergoActive premium seats

In addition to the individual temperature settings (cooling and heating), the driver and front passenger have the option of activating an automatic mode instead. Here, temperature and moisture sensors in the seats detect the cooling and/or heating requirement and control the climate accordingly. Three special modes can also be selected: maximum heating, maximum ventilation or maximum drying. All three modes are activated for a limited time and switch off automatically. In addition, the intensity of the heating and ventilation can be adjusted separately for the seat cushion and backrest. The bolsters of the seat cushion and backrest are also heated and ventilated.

<sup>1</sup> ID.7 Pro S – Power consumption in kWh/100 km: combined 16.2–13.6. CO<sub>2</sub> emissions in g/km: combined 0. CO<sub>2</sub> class: A.

<sup>2</sup> ID.7 Tourer Pro S – Power consumption in kWh/100 km: combined 16.6–14.0. CO<sub>2</sub> emissions in g/km: combined 0. CO<sub>2</sub> class: A.





Smart Glass<sup>12</sup> in transparent setting.

### Panoramic sunroof with Smart Glass<sup>12</sup>

All ID.7 models can be configured with the panoramic sunroof with Smart Glass<sup>12</sup> as an option. The transparent roof can be made opaque or transparent again from one moment to the next by means of a polymer-dispersed liquid crystal (PDLC) layer integrated in the glass. The switch is activated by touch control in the roof console or by the online IDA voice assistant. The electronic PDLC layer is de-energised when the glass is opaque. This causes the crystals in the layer to arrange themselves so that the glass becomes opaque. In contrast, as soon as an electric voltage is applied to the layer, the crystals then order themselves so that light

is again allowed to pass through. In addition to this switchable glare protection function, layers in the glass also reflect the energy-rich infra-red rays in the sunlight that would otherwise heat up the vehicle interior in sunny weather. To complement this, layers in the glass reflect heat radiated in the interior, which ensures a very comfortable experience for vehicle occupants, particularly in winter.

### Towing bracket and bicycle carrier

Volkswagen offers a swivelling towing bracket for all ID.7 models. The maximum permissible trailer weight is 1,200 kg (braked at 8%), 1,000 kg (braked at 12%)



Smart Glass<sup>12</sup> in opaque setting.

or 750 kg (unbraked), depending on the gradient and trailer version. The drawbar load is 75 kg, ensuring that even e-bikes can be transported. Volkswagen's Compact II bicycle carrier, which can be folded with a foot switch, can be ordered under the accessories programme. Since the tail light clusters, rails and carrier frame can be folded up, the carrier can be stowed in the luggage compartment.

**Base carrier for roof box** Volkswagen has developed a base carrier for the roof of the ID.7 models so that items such as skis can be transported outside the vehicle. Furthermore, Volkswagen Accessories offers the

Comfort roof box with a stowage volume of 460 litres. Using a feature known as the DuoLift system, this box can be loaded from both sides of the vehicle.

<sup>1</sup> ID.7 Pro S – Power consumption in kWh/100 km: combined 16.2–13.6. CO<sub>2</sub> emissions in g/km: combined 0. CO<sub>2</sub> class: A.

<sup>2</sup> ID.7 Tourer Pro S – Power consumption in kWh/100 km: combined 16.6–14.0. CO<sub>2</sub> emissions in g/km: combined 0. CO<sub>2</sub> class: A.





The ID.7 Tourer Pro S² with illuminated VW badge.

<sup>1</sup> ID.7 Pro S – Power consumption in kWh/100 km: combined 16.2–13.6. CO<sub>2</sub> emissions in g/km: combined 0. CO<sub>2</sub> class: A.

<sup>2</sup> ID.7 Tourer Pro S – Power consumption in kWh/100 km: combined 16.6–14.0. CO<sub>2</sub> emissions in g/km: combined 0. CO<sub>2</sub> class: A.

**Assist systems** The optional assist systems include the new Park Assist Pro with Park Distance Control, the memory function for Park Assist, the enhanced Connected Travel Assist with online data and Area View. All these systems can be configured with a single click by selecting the IQ.DRIVE assist systems package:

### » Connected Travel Assist with online data

The familiar Travel Assist function (including Lane Assist, Adaptive Cruise Control (ACC) and Emergency Assist) has been enhanced and connected even more closely with online data. The system has therefore been renamed Connected Travel Assist with online data. The latest version responds even more like a person would than the predecessor system and offers assisted lane changing on motorways<sup>14</sup>. The system adapts the vehicle speed predictively<sup>14</sup> – including before bends or roundabouts. Connected Travel Assist with online data accesses the anonymised driving data of hundreds of thousands of other Volkswagen vehicles online in a backend. As soon as this data is available online, the new Connected Travel Assist with online data<sup>15</sup> can, for example, keep the vehicle in lane even without detectable lane boundaries and adapt the speed even more perfectly to the flow of the road.

### » Park Assist Pro and memory function

The basic function of Park Assist Pro is a system that is familiar from other Volkswagen models and allows assisted parking<sup>14</sup> in parallel or bay parking spaces. Assisted driving out of parallel parking spaces<sup>14</sup> is equally possible. The ID.7 models take over control of acceleration, braking and steering for this purpose. The memory function is new.

With this feature, the system records the last 50 metres driven and thus the parking situation. The parking manoeuvre can be stored when the ID.7 has come to a stop. When the Volkswagen reaches this position again, it automatically offers to take over parking<sup>14</sup>. Independent driving out of a parking space<sup>14</sup> is also possible. Up to five parking manoeuvres can be stored. Remote parking is also new. Using Park Assist Pro and an app of the same name, it is also possible to drive the ID.7 into and out of parking spaces remotely from outside the vehicle using a smartphone<sup>14</sup>.

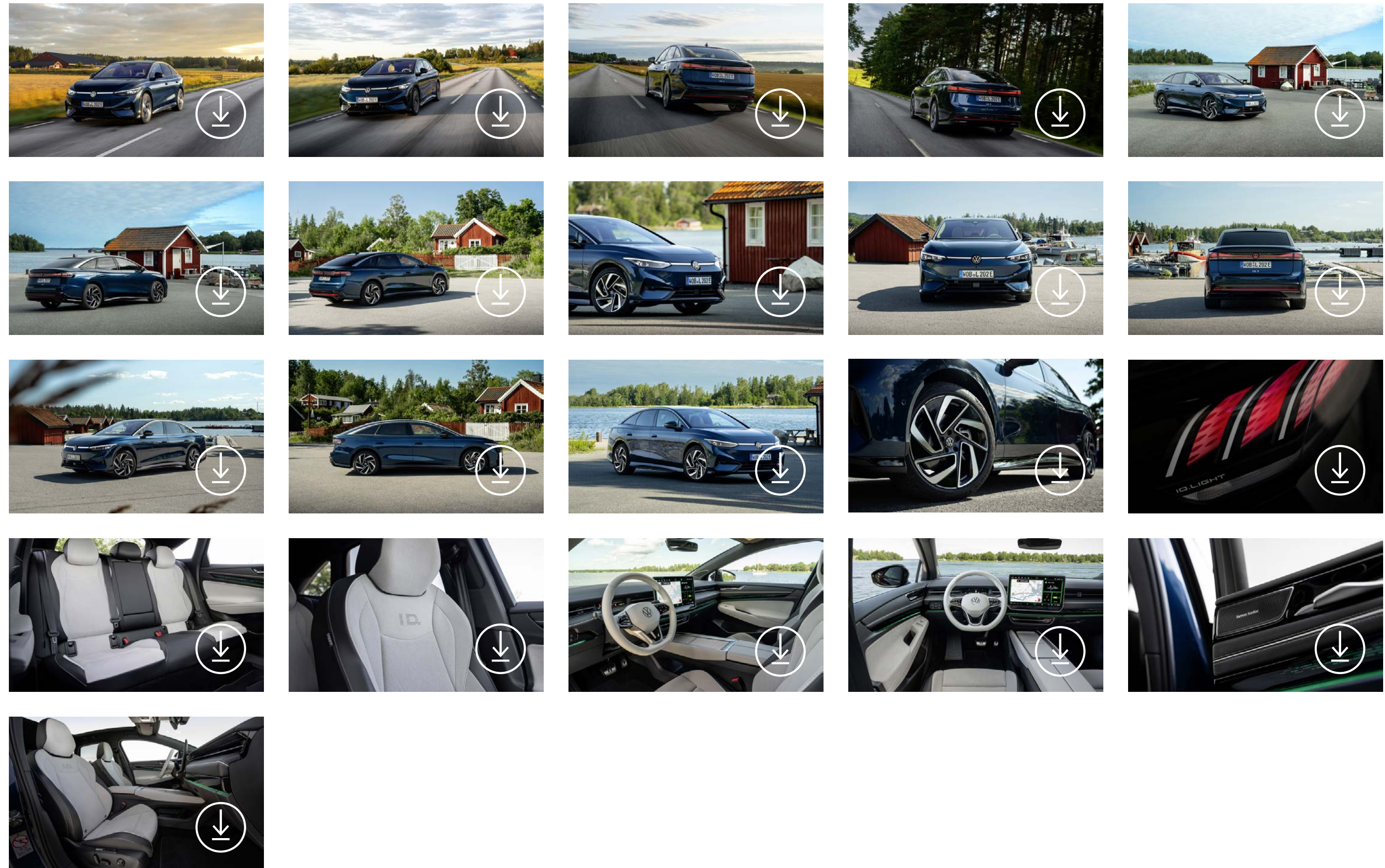
### » Area View

All ID.7 models are equipped with a rear view camera system as standard. With the IQ.DRIVE package, the system additionally accesses a camera in each of the exterior mirrors and a camera at the front and uses the data to calculate a 360-degree bird's-eye view of the ID.7: Area View. This shows the vehicle from above, allowing kerbs and parking space markings to be recognised clearly, for example. It is even possible to look around corners when technically feasible.



# MEDIA LIBRARY

## The new ID.7 Pro S<sup>1/2</sup> in Aquamarinblau Metallic



### Terms of use

The information and material such as text, image, audio or video documents available on [www.volkswagen-newsroom.com](http://www.volkswagen-newsroom.com) is intended solely for personal information purposes, or may be used for editorial purposes on the social web, or, in the case of journalists, influencers and media enterprise employees, may be used as a source for their own editorial coverage. Text, image, audio or video documents may not be used for commercial purposes and may not be passed on to third parties. The relevant terms of use also apply for the usage of [www.volkswagen-newsroom.com](http://www.volkswagen-newsroom.com).

### Family Shots

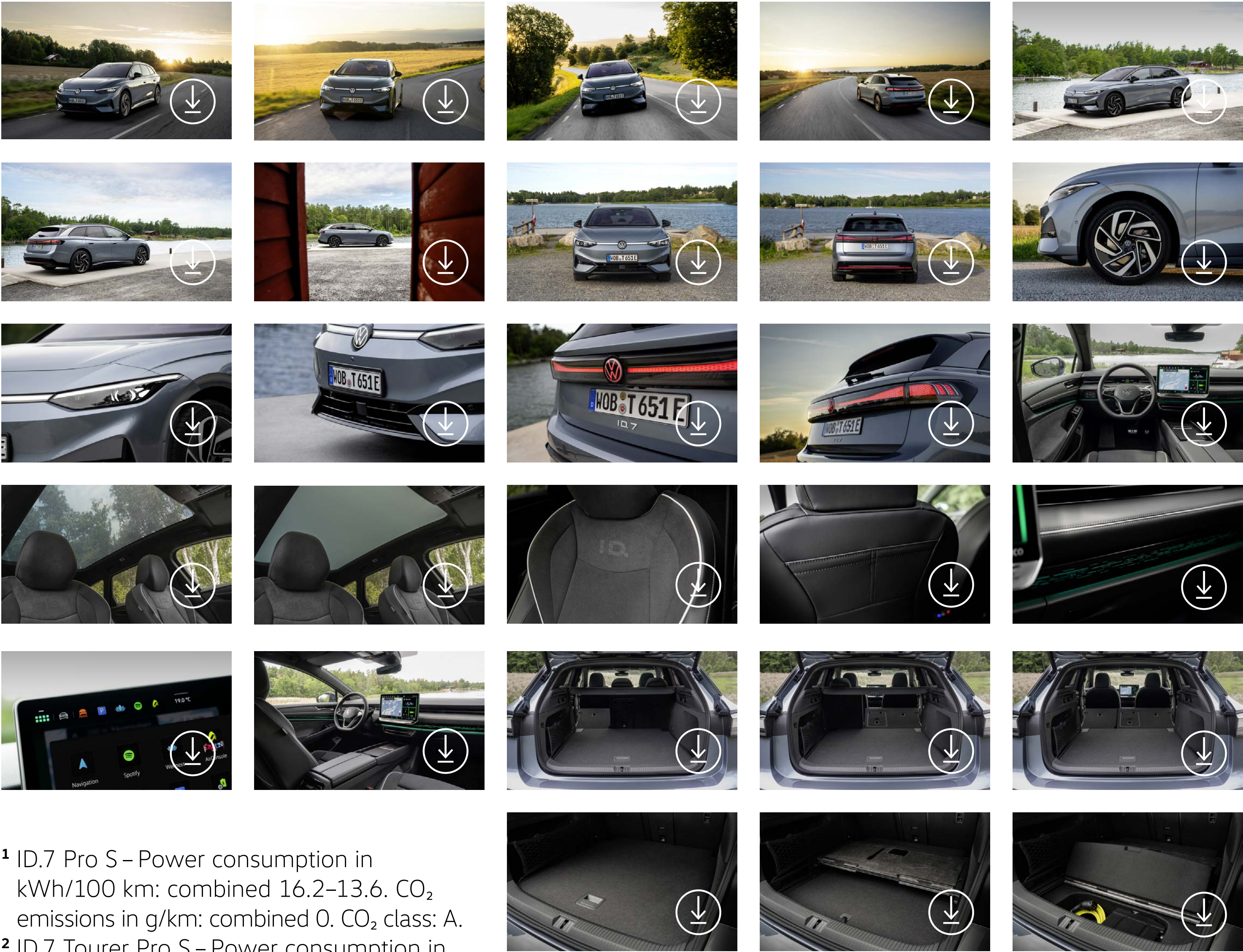
- <sup>1</sup> ID.7 Pro S – Power consumption in kWh/100 km: combined 16.2–13.6. CO<sub>2</sub> emissions in g/km: combined 0. CO<sub>2</sub> class: A.
- <sup>2</sup> ID.7 Tourer Pro S – Power consumption in kWh/100 km: combined 16.6–14.0. CO<sub>2</sub> emissions in g/km: combined 0. CO<sub>2</sub> class: A.



# MEDIA LIBRARY

**Terms of use**  
The information and material such as text, image, audio or video documents available on [www.volkswagen-newsroom.com](http://www.volkswagen-newsroom.com) is intended solely for personal information purposes, or may be used for editorial purposes on the social web, or, in the case of journalists, influencers and media enterprise employees, may be used as a source for their own editorial coverage. Text, image, audio or video documents may not be used for commercial purposes and may not be passed on to third parties. The relevant terms of use also apply for the usage of [www.volkswagen-newsroom.com](http://www.volkswagen-newsroom.com).

## The new ID.7 Tourer Pro S<sup>2/3</sup> in Stonewashed Blue Metallic



- <sup>1</sup> ID.7 Pro S – Power consumption in kWh/100 km: combined 16.2–13.6. CO<sub>2</sub> emissions in g/km: combined 0. CO<sub>2</sub> class: A.
- <sup>2</sup> ID.7 Tourer Pro S – Power consumption in kWh/100 km: combined 16.6–14.0. CO<sub>2</sub> emissions in g/km: combined 0. CO<sub>2</sub> class: A.



# NOTES

- <sup>1</sup> ID.7 Pro S – Power consumption in kWh/100 km: combined 16.2–13.6. CO<sub>2</sub> emissions in g/km: combined 0. CO<sub>2</sub> class: A.
- <sup>2</sup> ID.7 Tourer Pro S – Power consumption in kWh/100 km: combined 16.6–14.0. CO<sub>2</sub> emissions in g/km: combined 0. CO<sub>2</sub> class: A.
- <sup>3</sup> Maximum possible charging capacity. The charging behaviour of different charging stations can differ, even if their kW capacity is the same. In addition to a charging station's kW output, the maximum charge current also influences the amount of energy that flows. Furthermore, the ambient temperature, battery temperature and charge level influence the maximum possible charging capacity. The specified maximum charging capacity is calculated under WLTP conditions at a temperature of approx. 23 °C and a charge level from five per cent. If these variables change, the charging capacity may deviate from the specified standard value.
- <sup>4</sup> To use the Wellness In-Car App, you need a Volkswagen ID user account and a separate VW Connect contract, which must be concluded with Volkswagen AG online at **www.myvolkswagen.net** or in the Volkswagen app (available in the App Store and Google Play Store). In addition, identification as the primary user is required. You can find the In-Car App in the In-Car Shop of the infotainment system or in the Volkswagen Connect Shop (at **https://connect-shop.volkswagen.com**), whereby availability may vary from country to country. An active internet connection is required to download the Wellness In-Car App in the In-Car Shop. The In-Car App can be used by all drivers and cannot be transferred to other vehicles. Further information is available at **connect.volkswagen.com** and from your Volkswagen dealership. Please also note the current terms and conditions for the Wellness App.
- <sup>5</sup> ID.7 Pro – Power consumption in kWh/100 km: combined 16.1–14.0. CO<sub>2</sub> emissions in g/km: combined 0. CO<sub>2</sub> class: A.
- <sup>6</sup> ID.7 Tourer Pro – Power consumption in kWh/100 km: combined 16.5–14.4. CO<sub>2</sub> emissions in g/km: combined 0. CO<sub>2</sub> class: A.
- <sup>7</sup> Net energy content.
- <sup>8</sup> Range determined on the rolling road test bed in accordance with WLTP in the most range-favourable equipment variant of the ID.7 Tourer Pro with a net battery energy content of 77 kWh. The actual WLTP range values may differ depending on the equipment. The actual range achieved under real conditions varies depending on the driving style, speed, use of comfort features or auxiliary equipment, outside temperature, number of passengers/load, and topography.
- <sup>9</sup> ID.7 GTX – Power consumption in kWh/100 km: combined 18.4–16.2. CO<sub>2</sub> emissions in g/km: combined 0; CO<sub>2</sub> class: A.
- <sup>10</sup> ID.7 GTX Tourer – Power consumption in kWh/100 km: combined 18.8–16.6; CO<sub>2</sub> emissions in g/km: combined 0. CO<sub>2</sub> class: A.
- <sup>11</sup> All equipment specifications apply to the German market. Other markets may vary.
- <sup>12</sup> Optional equipment.
- <sup>13</sup> Volkswagen AG (Volkswagen) provides access to AirConsole with this In-Car App. Volkswagen is not responsible for the provision of the AirConsole content. N-Dream AG provides the games under its own responsibility. The use of AirConsole games is governed by N-Dream AG's terms of use and privacy policy. Information on data processing for the purpose of transferring data to N-Dream AG can be found in the VW Connect Privacy Policy.
- <sup>14</sup> Within the system limits, the driver must always be ready to override the assist system and is not released from the responsibility of driving the vehicle with due care and attention.

# NOTES

- <sup>15</sup> The driver assist function Swarm Data for Travel Assist can only be used within the limits of the system and up to the vehicle's maximum speed. The driver is solely responsible for driving the vehicle with care and must always be prepared to override the assist system. If the driver intervenes, they always regain full control. The assist function can be activated and deactivated at any time using the button on the multifunction steering wheel. To activate the Swarm Data for Travel Assist service, you need a Volkswagen ID user account and a valid contract term for VW Connect/We Connect (for details, see: <https://www.volkswagen.de/de/konnektivitaet-und-mobilitaetsdienste/konnektivitaet/we-connect/aktivierung.html>). In addition, a separate contract is required for the swarm data, in other words, the online component. You have the option of extending the term subject to a fee after the initial period of use has expired. The online component of Travel Assist is available in the following countries: Austria, Belgium, Bulgaria, Croatia, Cyprus, Czech Republic, Denmark, Estonia, Finland, France, Germany, Great Britain & Northern Ireland, Greece, Hungary, Ireland, Italy, Latvia, Lithuania, Luxembourg, Malta, Netherlands, Norway, Poland, Portugal, Romania, Slovakia, Slovenia, Spain, Sweden and Switzerland. The online component of Swarm Data for Travel Assist can only be used within the scope of mobile network coverage and with the corresponding privacy settings, and can be deactivated at any time in the app and myVolkswagen.
- The online functions, i.e. the swarm data, are made possible by an internet connection integrated in the vehicle. The related data charges incurred within Europe are borne by Volkswagen AG where network coverage is available. Depending on mobile phone tariff, data transfer via the internet may incur additional charges (e.g. roaming charges), particularly if used abroad. The services are available for the agreed contract term and may change or be discontinued during this contract term. Further information is available at [connect.volkswagen.com](https://connect.volkswagen.com) and from your Volkswagen dealership. Information on mobile tariffs is available from your mobile provider.
- <sup>16</sup> To use Park Assist Pro for remote-controlled parking, you will need to download the VW Park Assist Pro app from Volkswagen AG. You must accept the terms of use in the app before using the function for the first time. The app is designed for iOS devices (iOS 15 or later; iPhone 6s or later). When used with other devices, especially Android devices, there may be limitations in establishing the Bluetooth connection or its stability, depending on the operating system and model of the mobile device. If this happens, it will not be possible to carry out the parking manoeuvre remotely, or the manoeuvre will be cancelled. Further information on the app can be found here: <https://apps.apple.com/de/app/vw/id1515103231>; <https://play.google.com/store/apps/details?id=de.volkswagen.pap>

The range specifications are forecast values in accordance with the Worldwide Harmonized Light Vehicles Test Procedure, WLTP. The actual WLTP range values may vary depending on equipment. The actual range achieved under real conditions may vary depending on the driving style, speed, use of comfort features or auxiliary equipment, outside temperature, number of passengers / overall load, and topography.

The specified fuel consumption and emissions data are determined in accordance with the measurement procedures prescribed by law. On 1 January 2022, the WLTP test cycle completely replaced the NEDC test cycle and therefore no NEDC values are available for new type approved vehicles after that date.

This information does not refer to a single vehicle and is not part of the offer but is only intended for comparison between different types of vehicles. Additional equipment and accessories (additional components, tyre formats, etc.) can alter relevant vehicle parameters such as weight, rolling resistance and aerodynamics, affecting the vehicle's fuel consumption, power consumption, CO<sub>2</sub> emissions and driving performance values, in addition to the impact of weather and traffic conditions and individual driving behaviour.

Due to more realistic testing conditions, fuel consumption and CO<sub>2</sub> emissions measured according to WLTP will in many cases be higher than the values measured according to NEDC. As a result, the taxation of vehicles may change accordingly as of 1 September 2018. For further information on the differences between WLTP and NEDC, please visit **<http://www.volkswagen.de/wltp>**.

Further information on official fuel consumption data and official specific CO<sub>2</sub> emissions for new passenger cars can be found in the "Guide to fuel economy, CO<sub>2</sub> emissions and power consumption for new passenger car models", which is available free of charge from all sales dealerships and from DAT Deutsche Automobil Treuhand GmbH, Hellmuth-Hirth-Str. 1, D-73760 Ostfildern, Germany and at **[www.dat.de/co2](http://www.dat.de/co2)**.

Volkswagen Aktiengesellschaft  
Berliner Ring 2  
D-38440 Wolfsburg

Responsible for the contents:  
Volkswagen Product Communications

Picture credit:  
Volkswagen Aktiengesellschaft

Date: August 2024

© 2024 Volkswagen Aktiengesellschaft



**ID.7 Tourer Pro S** Power consumption in kWh/100 km: combined 16.6–14.0. CO<sub>2</sub> emissions in g/km: combined 0. CO<sub>2</sub> class: A.